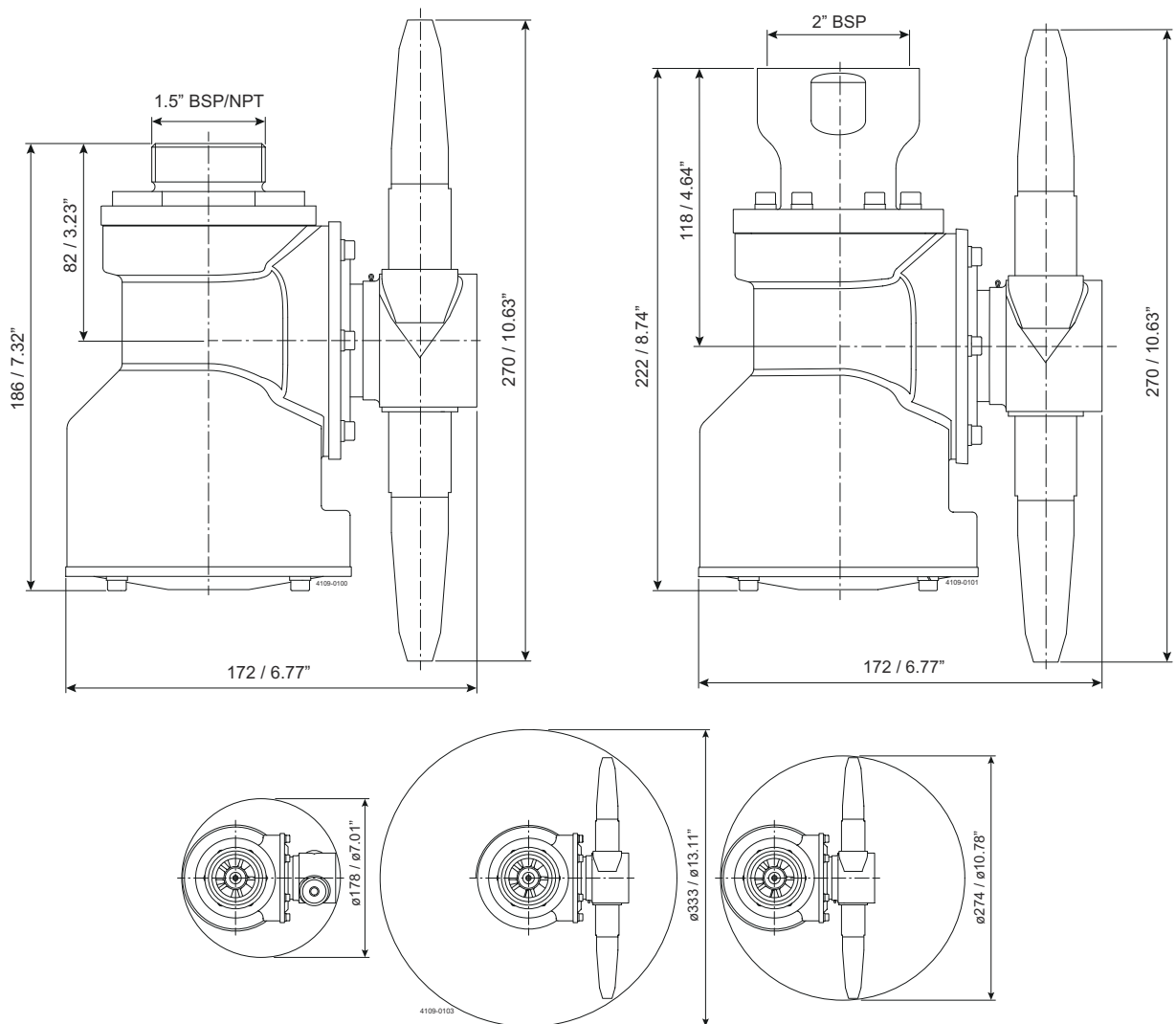


2 Nozzle version

Weight of machine:	6.5 kgs (14,3 lb)
Working pressure:	2–12 bar (30-175 psi)
Recommended inlet pressure:	3–8 bar (45-120 psi)
Working temperature max.:	95°C (200°F)
Ambient temperature:	0 - 140°C (95°C - 140°C when not operated)
Materials:	Stainless steel AISI 316/AISI 316L, PFA, A4, ACO212CF, PEEK, PA6G, FKM

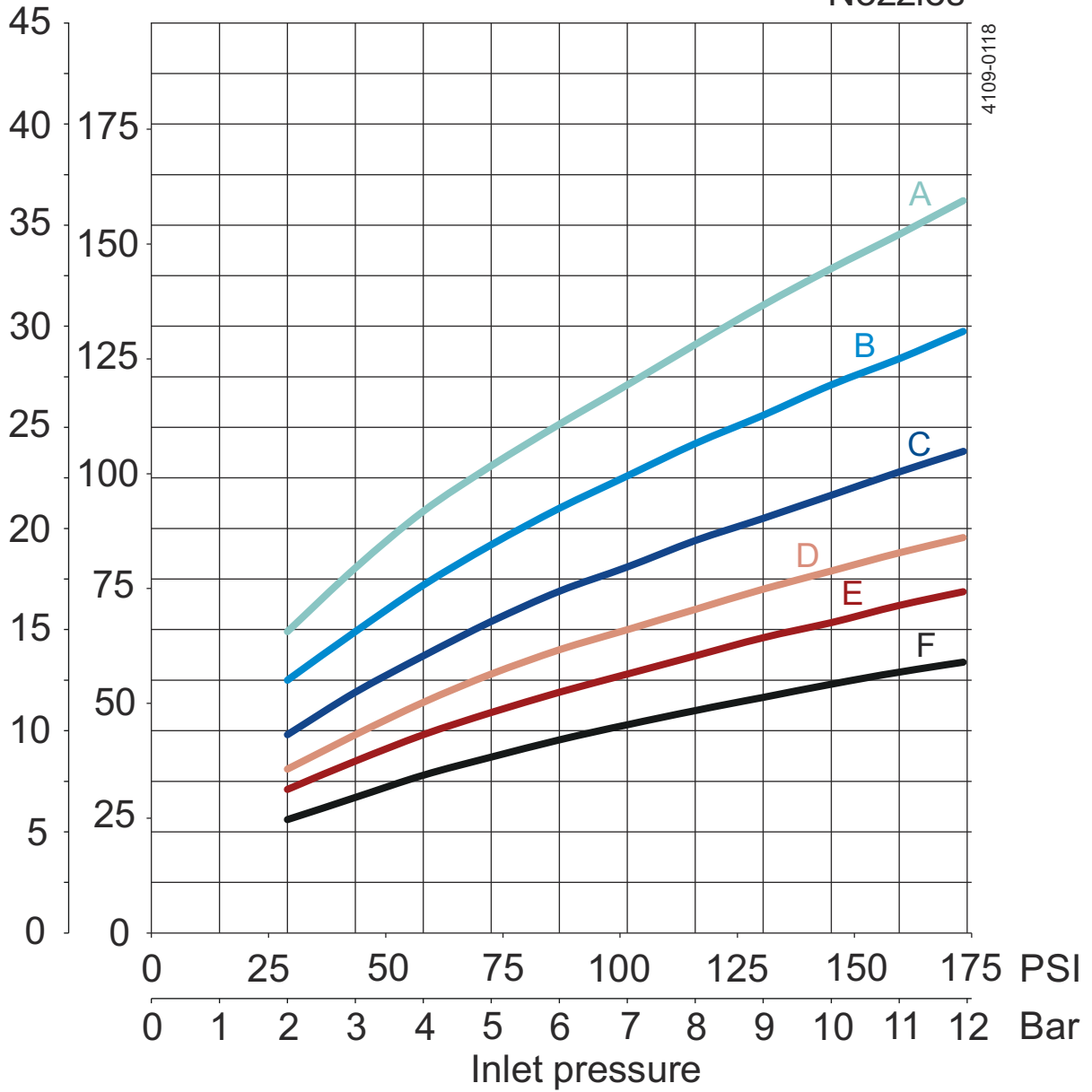
Principal dimensions in mm



Flow rate

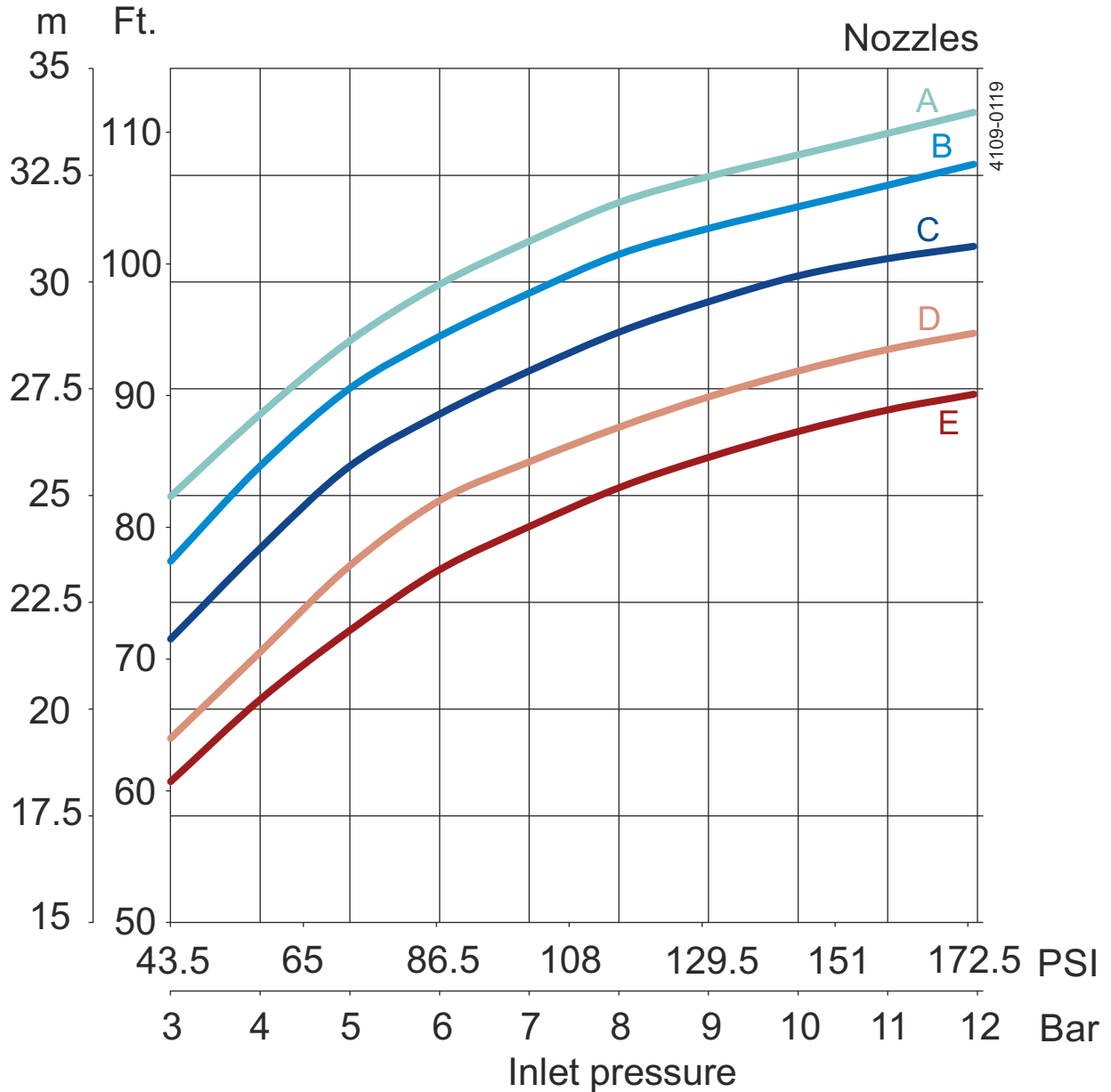
m³/h GPM

Nozzles



- A = 2 x ø14 mm D = 2 x ø9 mm
- B = 2 x ø12 mm E = 2 x ø8 mm
- C = 2 x ø10 mm F = 2 x ø7 mm

Throw length



A = 2 x \varnothing 14 mm, Max static
 B = 2 x \varnothing 12 mm, Max static
 C = 2 x \varnothing 10 mm, Max static

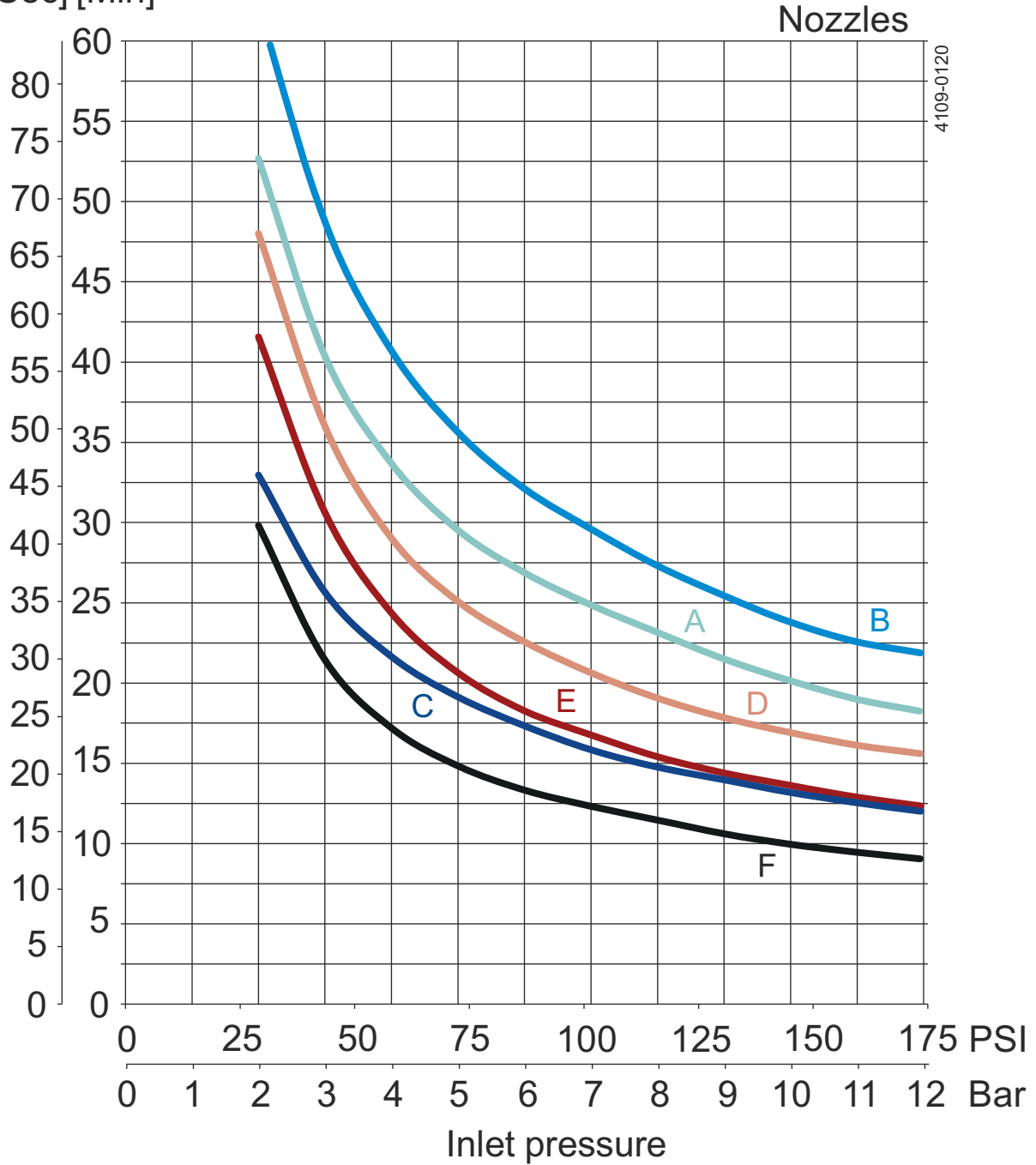
D = 2 x \varnothing 8 mm, Max static
 E = 2 x \varnothing 7 mm, Max static

Note: Throw lengths are measured as horizontal throw length at static condition. Vertical throw length upwards is approx. 1/3 less. Effective throw length is defined as impact centre of jet 250 mm water column (50 lbs/sq.ft). Effective throw length varies depending on jet transverse speed over surface, substance to be removed, cleaning procedure and agent. The inlet pressure has been taken immediately before the machine inlet. In order to achieve the performance indicated in the curves, the pressure drop in the supply lines between pump and machine must be taken into consideration.

Cleaning Time, f. complete Pattern (=8 cycles)

Sec. pr. Rev. PTM(Pattern time Minutes)

[Sec] [Min]



- | | |
|----------------------|----------------|
| A = 2 x ø14 mm | D = 2 x ø10 mm |
| B = 2 x ø12 mm | E = 2 x ø8 mm |
| C = 2 x ø12 mm, fast | F = 2 x ø7 mm |